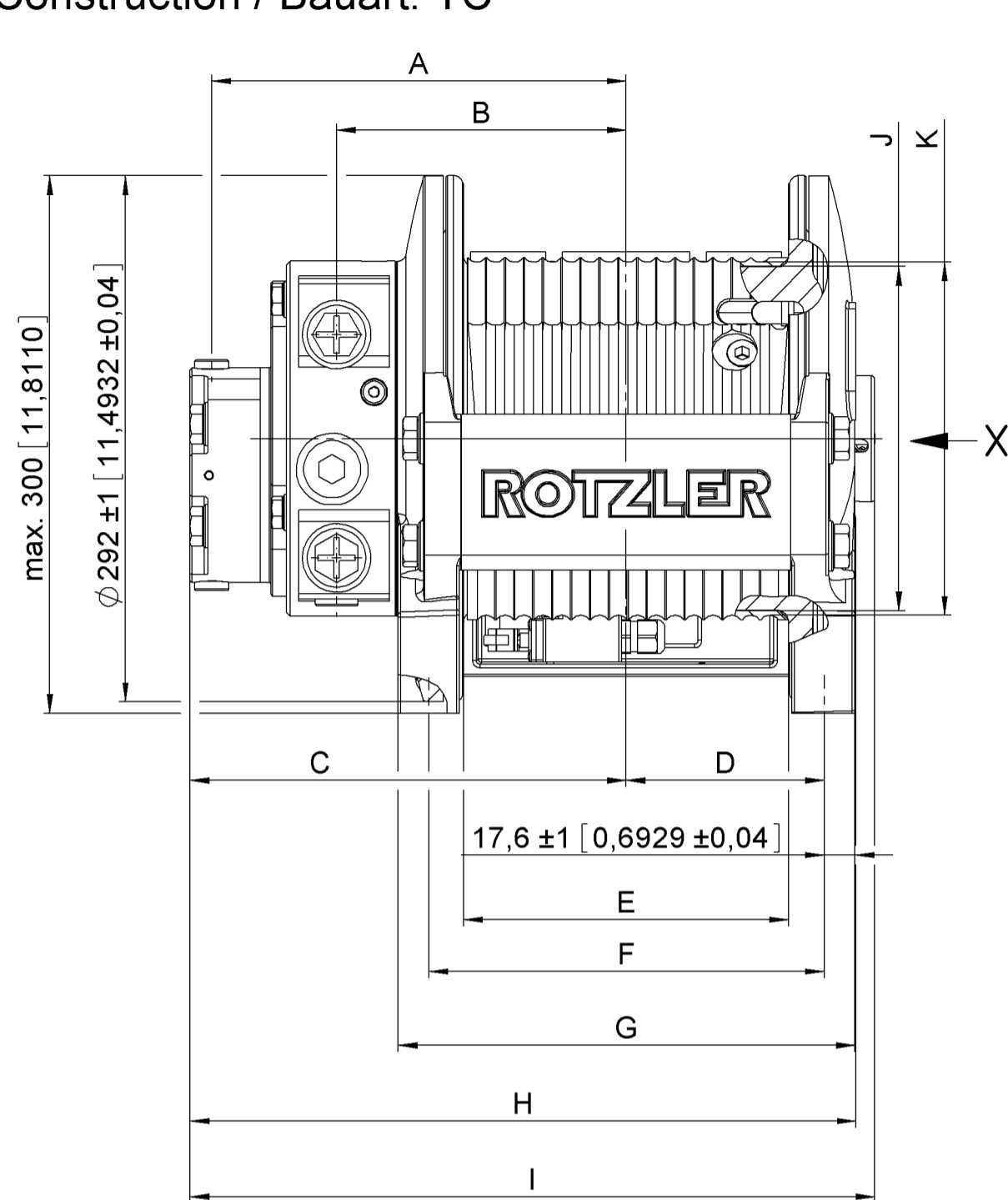
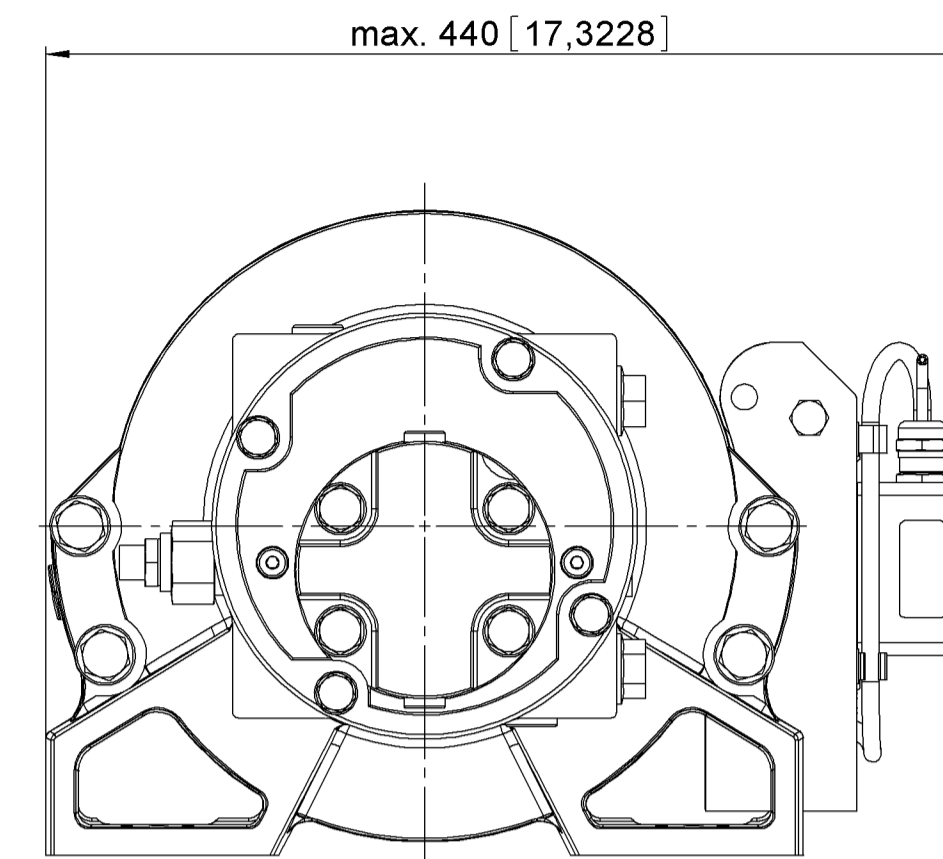
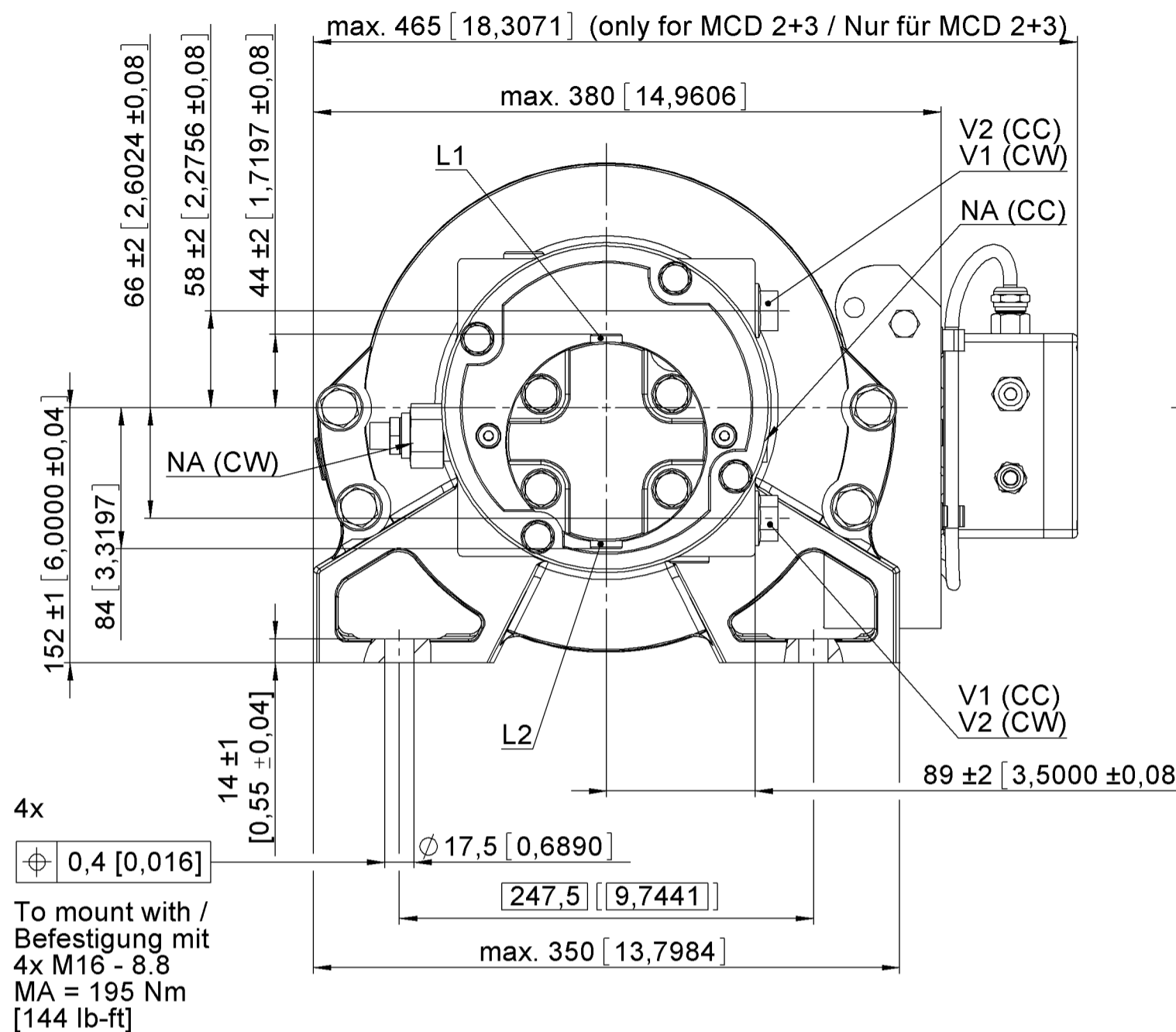


Winch Dimensions / Windenabmessungen

Construction / Bauart: TC



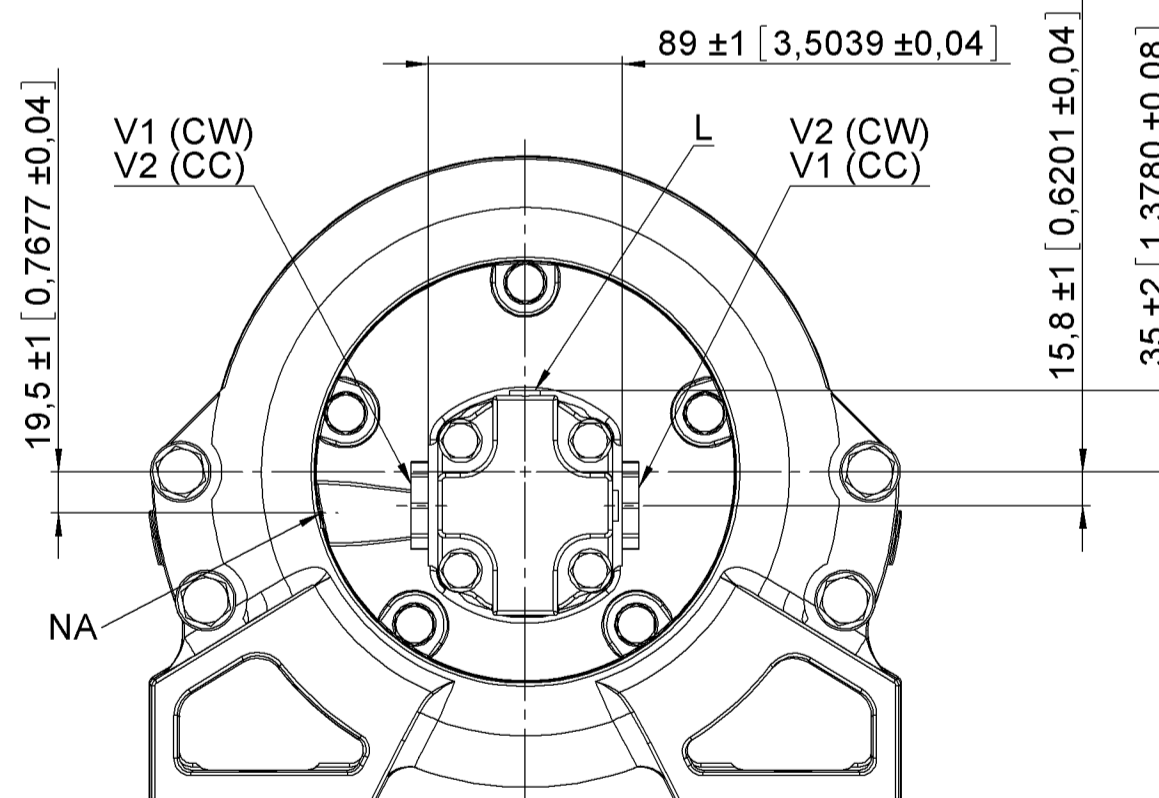
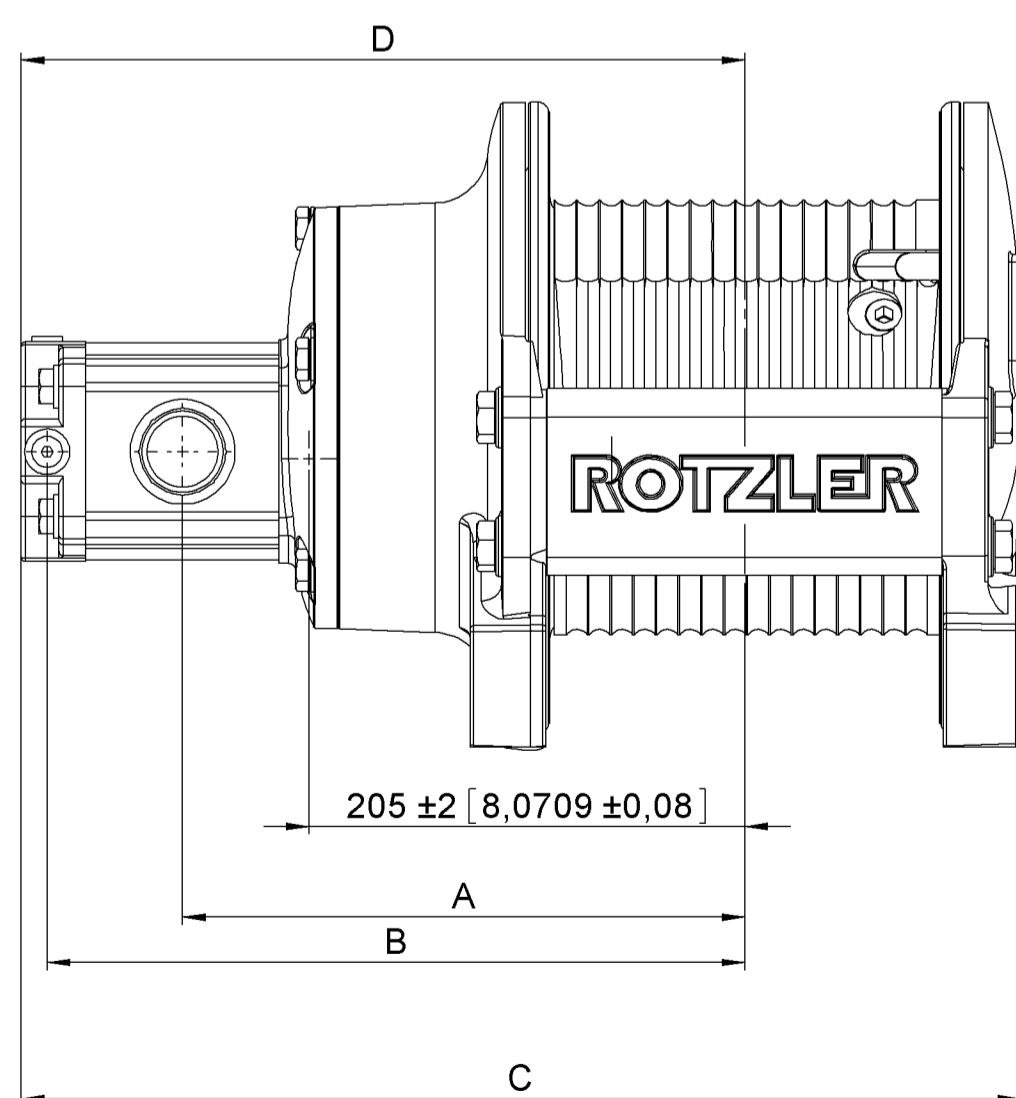
| TC only / nur für TC Dimension / Maß | Drum width / Trommelbreite | |
|---|-------------------------------|-----------------------------|
| | Standard | 252 mm |
| A | 230 ± 2 [9,05 ± 0,08] | 267 ± 2 [10,51 ± 0,08] |
| B | 160 ± 2 [6,3 ± 0,08] | 198 ± 2 [7,8 ± 0,08] |
| C | 242 ± 2 [9,53 ± 0,08] | 280 ± 2 [11,02 ± 0,08] |
| D | 109,5 ± 2 [4,31 ± 0,08] | 146 ± 2 [5,75 ± 0,08] |
| E | 180 ± 2 [7,09 ± 0,08] | 252 ± 2 [9,92 ± 0,08] |
| F | 219 ± 1 [8,62 ± 0,04] | 292,5 ± 1 [11,52 ± 0,08] |
| G | max. 256 [max. 10,1] | max. 330 [max. 13] |
| H | max. 375 [max. 14,8] | max. 450 [max. 17,7] |
| I | max. 385 [max. 15,2] | max. 460 [max. 18,1] |
| J | max. 190,5 [max. 7,5] | - |
| K | max. 200,5 [max. 7,72] | max. 200,5 [max. 7,72] |



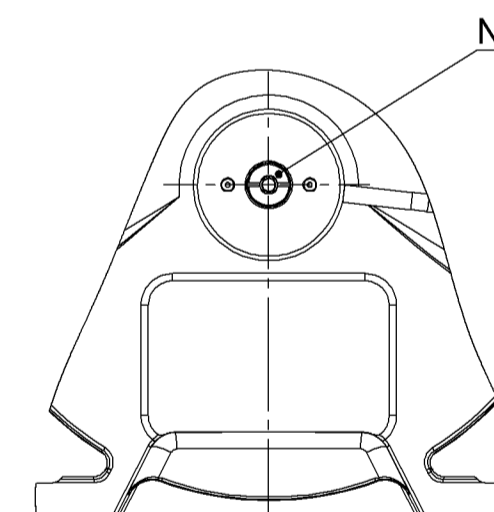
MCD type / MCD typ: 4+5
(Only differences to MCD 2+3 are shown /
Nur die Unterschiede zur MCD 2+3 sind gezeigt)

Construction / Bauart: TH

(Only differences to TC are shown / Nur die Unterschiede zur TC sind gezeigt)



View / Ansicht X



| | TC | TH |
|--|------|-------------------------|
| V2 Druckölanschluß Winde "Seil ein" pressure oil connection winch "rope in" | G3/4 | 1 5/16 -12 #16 SAE |
| V1 Rückölanschluß Winde "Seil ein" return oil connection winch "rope in" | G3/4 | 1 5/16 -12 #16 SAE |
| L1 Leckölanschluß / leakage oil connection | G1/4 | 7/16 - 20 |
| L2 Leckölanschluß / leakage oil connection | G1/4 | 7/16 - 20 #4 SAE |
| E Öleinfüll- und Ölablaßschraube oil filler and oil drain screw | G1/4 | 3/8 - 18 NPT SW 8 |
| N Niveauschraube / oil level screw | M12 | 3/8" NPT |

Dimensions in mm [inches]

| TH only / nur für TH Dimension / Maß | Motor Displacement/ Motor Schluckvolumen | | | |
|--|---|---------------------------|---------------------------|-----------------------------|
| | G010 | G016 | G019 | G031 |
| A | 248 ± 2 [9,76 ± 0,08] | 256 ± 2 [10,08 ± 0,08] | 259 ± 2 [10,2 ± 0,08] | 267,5 ± 2 [10,53 ± 0,08] |
| B | 292 ± 2 [11,5 ± 0,08] | 302 ± 2 [11,89 ± 0,08] | 306 ± 2 [12,05 ± 0,08] | 325 ± 2 [12,8 ± 0,08] |
| C | max 437 [max 17,2] | max 447 [max 17,6] | max 450 [max 17,7] | max 470 [max 18,5] |
| D | 302 ± 2 [11,89 ± 0,08] | 312 ± 2 [12,28 ± 0,08] | 320 ± 2 [12,6 ± 0,08] | 335 ± 2 [13,19 ± 0,08] |

| Index | Änderungstext | Datum | Name | Index | Änderungstext | Datum | Name |
|-------|--------------------|------------|--------|-------|---------------|-------|------|
| - | | 26.04.2010 | Ritter | | | | |
| A | parts list changed | 17.06.2010 | Meier | | | | |

| | | | | | |
|--------------------------|------------|--------|--------------------------------------|------------|---|
| gezeichnet | 02.06.2009 | Decker | Format A2 | | ROTZLER® D-79585 Steinen Tel. 07627/701-0 |
| geprüft | 17.06.2010 | Böhler | | | |
| zuletzt gespeichert: | | | T2 Configure to order / Varianten | 4000007234 | Blatt/Sheet 3/8 |
| 17.06.2010 7:42:00 Meier | | | | | |
| Ersatz für: | | | RELEASED (SERIES) | | |
| Ersetzt durch: | | | | | |

Weitergabe sowie Vervielfältigung dieses Dokuments, Verwertung und Mitteilung seines Inhalts sind verboten, soweit nicht ausdrücklich gestattet.
Zuwendungen verpflichten zu Schadenersatz. Alle Rechte für den Fall der Patent-, Gebrauchsmuster oder Geschmacksmustereintragung vorbehalten.

The reproduction, distribution and utilization of this document as well as the communication of its contents to others without explicit authorization is prohibited. Offenders will be held liable for the payment of damages. All rights reserved in the event of a patent, utility model or design.